

milestone
elements
BUSINESS SPACES



milestone group®

Established in 1968 'Milestone Group' is a name to reckon with in the field of realty development in the dazzling city of Surat. At Milestone Group, we believe that buildings should stand the test of time in terms of quality. We ensure this by using building materials of the highest quality, and hiring excellent craftsmen to build them. Our design philosophy is driven by simplicity of form, and functionality for its users; resulting in projects designed not for the bottom line, but as spaces for families to grow, and businesses to flourish.

We believe that customers must have a stress-free experience during and after the sales process. With this belief, we have conducted our business in a fair and transparent manner for more than 40 years, which is a testament in itself.

PAST PROMINENT PROJECTS

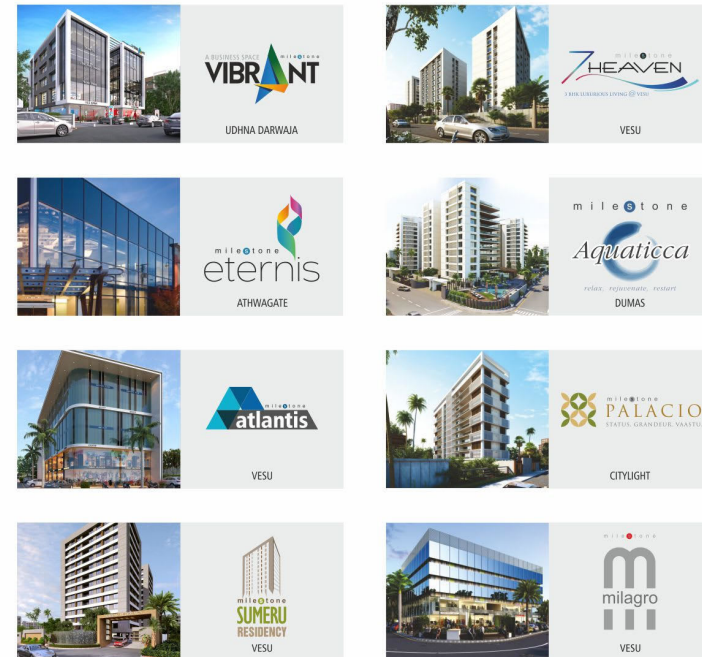
Over the last four decades we have initiated landmark projects which have revamped the infra structural map of Surat. Our archive of developments includes high-rise residential complexes, corporate houses, shopping arcades, bungalows, row houses et al. These remarkable creations are indeed some of the path breaking Milestones achieved by the Milestone Group!! Our pride is reflected in the satisfied clientele who possess these significant spaces. ...

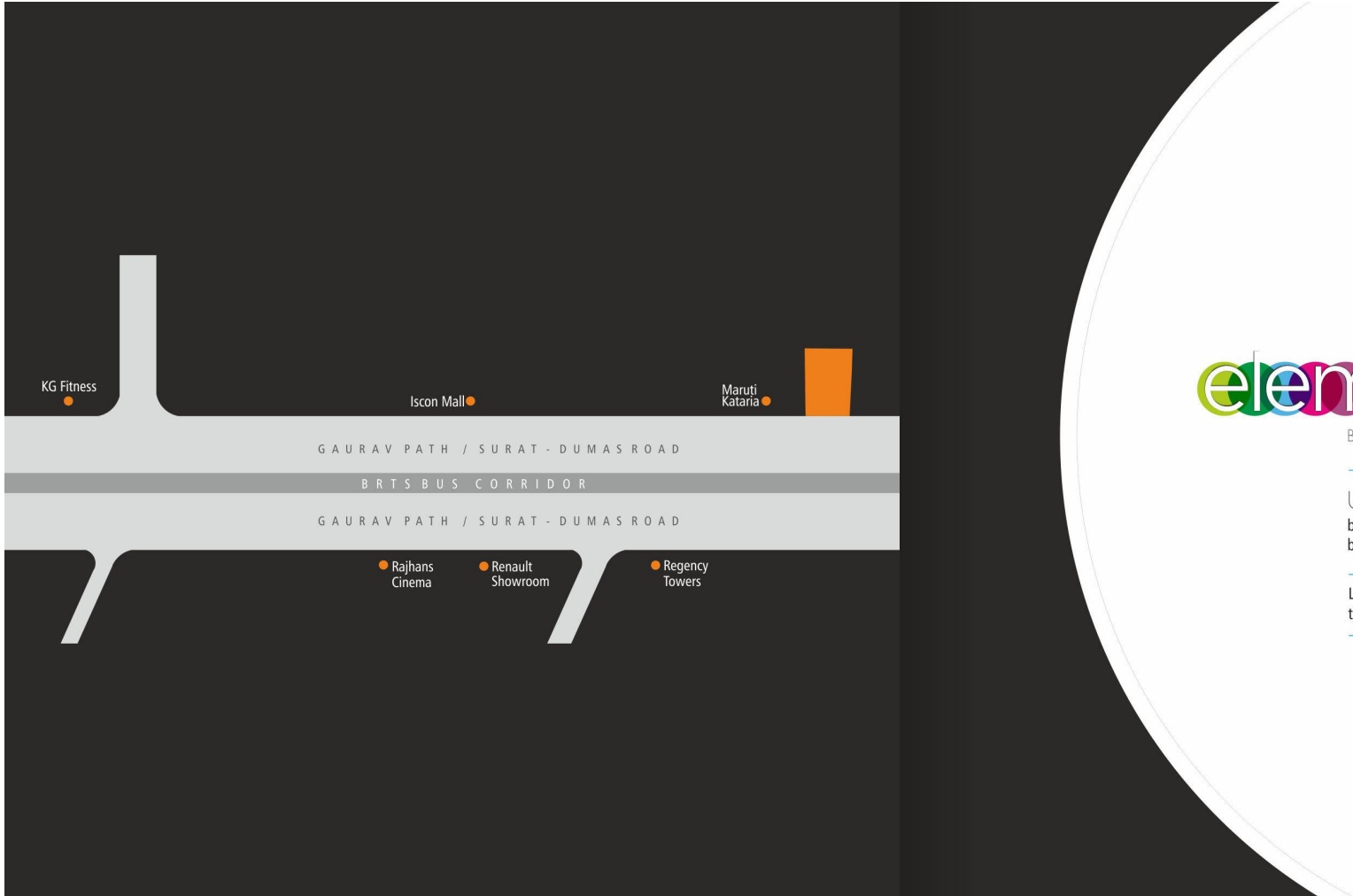
- Milestone Leone, Athwagate - Commercial Project
- Milestone Milagro, Vesu - Commercial Project
- Milestone Habitat, Kailashnagar - Residential Low Rise
- Milestone Ananta, City Light - Residential Low Rise
- Milestone Vivanta Farms, Surat-Navsari Rd. - Farm Houses

ONGOING PROJECTS FUTURE OF SURAT!!

Milestone Group has an aggressive plan to expand and thus some of its ambitious projects include:

- Milestone 7 Heaven, Vesu - Residential High Rise
- Milestone Aquaticca, Dumas - Residential High Rise
- Milestone Palacio, City Light - Residential High Rise
- Milestone Atlantis, Vesu - Commercial Project
- Milestone Elements, Piplod - Commercial Project
- Milestone Vibrant, Udhana Darwaja - Commercial Project
- Milestone Eternis, Athwagate - Commercial Project
- Milestone Sumeru Residency, Vesu - Residential High Rise





milestone
elements
BUSINESS SPACES

UNMATCHED LOCATION

be present in the neighborhood of best brands, malls, restaurants and Showrooms

Location of project on BRTS gives your staff the convenience to use public transport.



Spaces ideal for
Banks, Restaurants, Retail,
Automobile Showrooms &
Corporate Offices

EXCELLENT BUSINESS VISIBILITY WITH MORE THAN
24' WIDE FRONTAGE IN SHOWROOMS

milestone
elements
BUSINESS SPACES

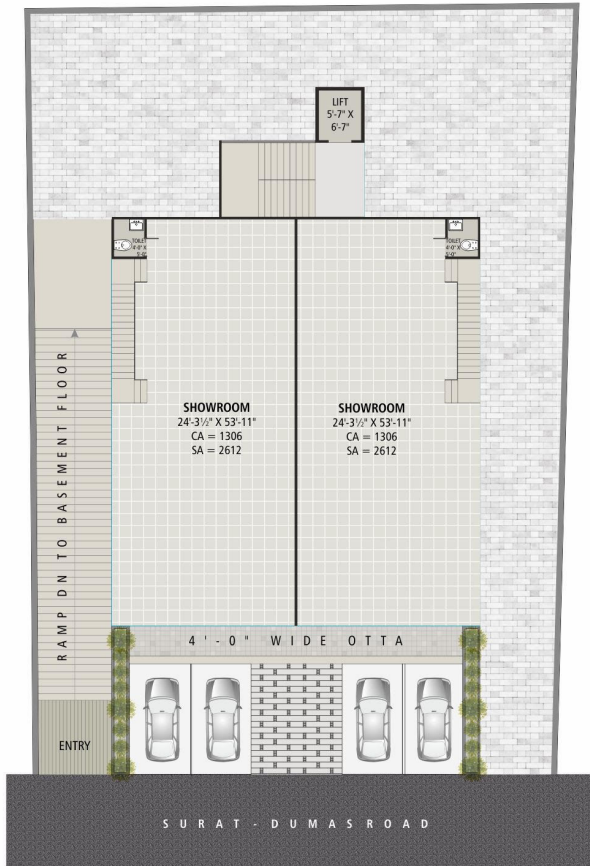
DESIGN AND ELEVATION THAT IS SURE TO
MAKE IT A FUTURE LANDMARK

ALLOTTED CAR PARKING FOR EVERYONE.

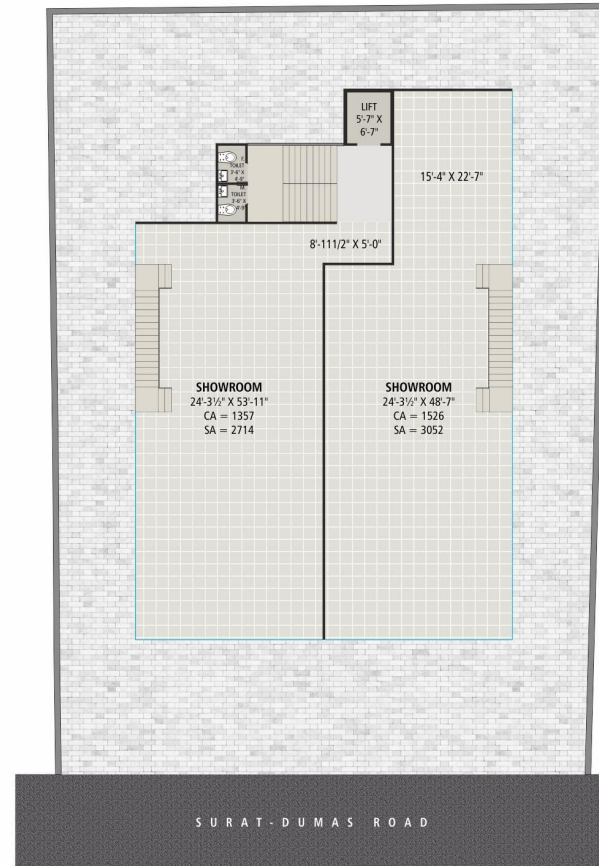
24 X 7 SURVEILLANCE THROUGH
CCTV NETWORK.



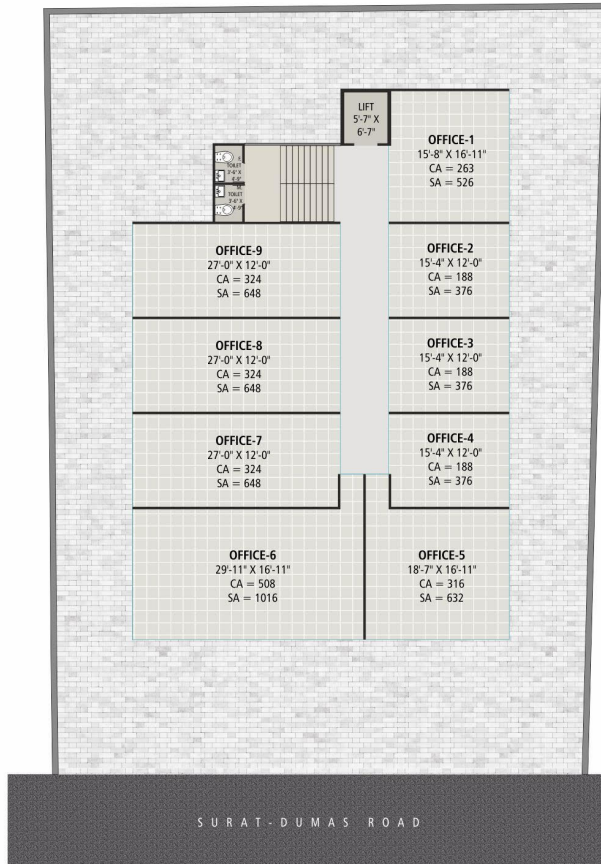
GROUND FLOOR PLAN ↻



1ST FLOOR PLAN ↻



TYPICAL FLOOR PLAN



SPECIFICATIONS

FLOORING

- 32" x 32" vitrified tiles flooring in showrooms & offices.
- Marble / granite / vitrified tiles in common areas.
- Granite / paver blocks at ground level parking area.
- Rough kota / concrete tremix flooring in basement.
- Granite flooring on staircase.

WALLS AND CEILING

- Vitrified tiles cladding in common areas.
- Granite / marble cladding in lift lobby.
- Gypsum finish on walls in showrooms and offices.
- Gypsum false ceiling in common areas.
- Putty finish on ceiling in showrooms and offices.

ELECTRICAL

- Basic light points in all showrooms and offices with AC points and provision for internet cabling.
- Low energy consuming LED fittings in common areas.

ELEVATORS

- Fully automated 8 passenger elevator of Kone / equivalent.

BATHROOMS

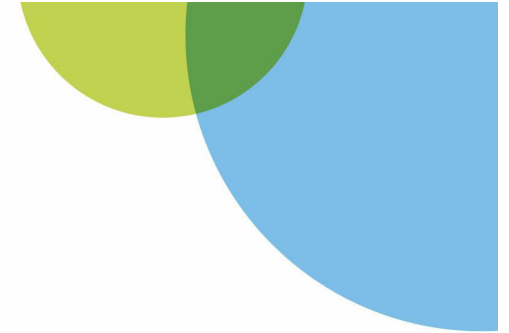
- Attached bathroom for showrooms with designer ceramic tiles on floors and walls up to lintel level.
- Common bathrooms on each floor for offices.
- Provision for bathrooms for all offices.

PARKING

- Dedicated car parking for showrooms and offices.

SECURITY

- 24-hour recording with high resolution infrared (night vision) cameras of all common areas and basement with 1 month backup capacity.





m i l e s t o n e
elements
 BUSINESS SPACES

SITE ADDRESS: Opp. Apple Hospital, Udhana Darwaja, Surat

m i l e s t o n e
 g r o u p

Architect
A&B
 ark@architects&beyond

Structural Engineer
 Er. Jaliil Sheikh
 Ph. (0261) 247 2288, 247 2299

ARK designs
 Interior Decorator
 Ark Designs
 Ar. Krutika Shah | 99983-50008

- NOTES
- Legal Document/Stamp Duty charges extra as applicable to be borne by members.
 - Applicable government taxes including Service Tax, VAT, etc. to be borne by members.
 - Deposits for all services to be borne by members.
 - Society maintenance charges to be borne by members.
 - External and internal changes strictly not allowed.
 - The brochure does not form part of an offer contract or agreement.
 - All plans/drawings/features/specifications are subject to approval of respective authorities and may be changed if necessary. The discretion remains with developers.
 - All rendering/floor plans/pictures and maps are artists' conception and not actual depiction of building.